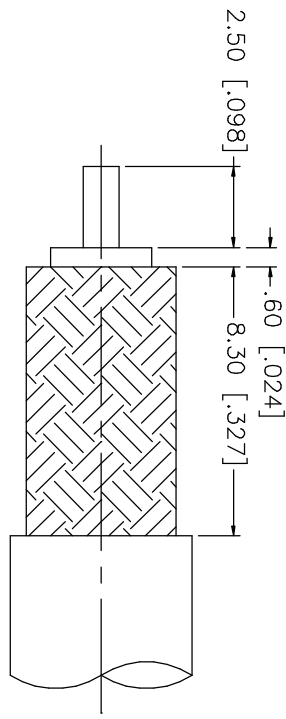
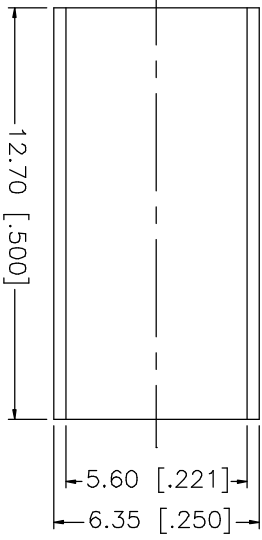
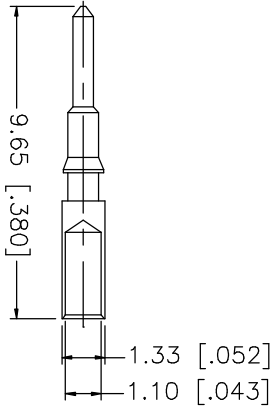
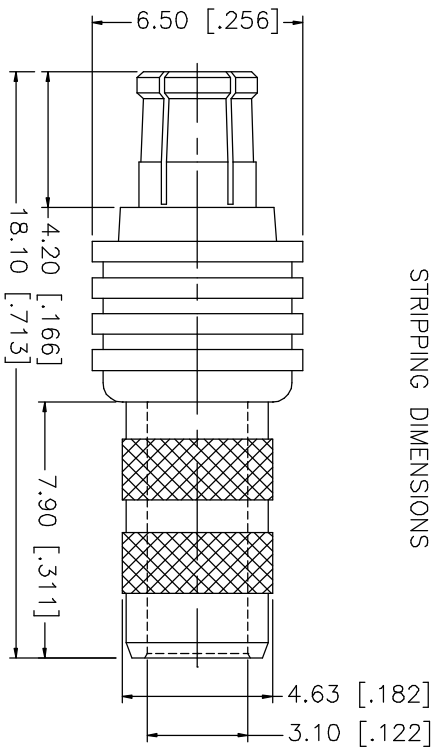


REV.	DATE	DESCRIPTION
NC	11/27/02	INITIAL RELEASE



RECOMMENDED CABLE STRIPPING DIMENSIONS



NOTES:

1. CRIMPED FERRULE
HEX CRIMP SIZE .213"
2. CRIMPED CONTACT PIN
SQ. CRIMP SIZE .043"

DESCRIPTION	MATERIAL	FINISH	UNLESS OTHERWISE SPECIFIED DIMENSIONS ARE IN MILLIMETERS	APPROVALS	DATE	TITLE	SCALE	PART NO.	DWG. NO.	REV.	
8			DIMENSIONS IN [] ARE IN INCHES FOR CUSTOMER REFERENCE ONLY UNLESS OTHERWISE SPECIFIED TOLERANCES FOR INCHES ARE: .XXX = ± 0.005" .XX = ± 0.010" .X = ± 0.020" DO NOT SCALE DRAWING	DRAWN	G.R.S.	11/27/02	MCX CRIMP PLUG (FOR RG-58A/U, 58C/U CABLE)	A	99001	252180.DWG	NC
7				CHECKED							
6				ISSUED							
5											
4	FERRULE	COPPER									
3	CONTACT PIN	BRASS									
2	INSULATOR	TEFLON									
1	BODY	BER. COPPER									
						Amphenol - Connex CONNECTOR CORPORATION					
						MCX CRIMP PLUG (FOR RG-58A/U, 58C/U CABLE)					
						SCALE NA					
						PART NO. 252180					
						SHEET 1 OF 1					